



Common pacemaker problems and resolutions

Erosion and twiddler's syndrome

Complications



- Erosion
- Twiddlers syndrome

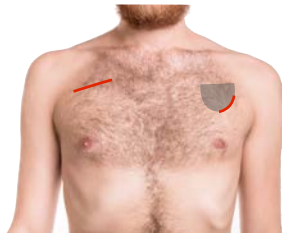


Pacemaker erosion

Predisposing factors



- Tissue fragility (older age)
- Thin subcutaneous fat layer
- Abrasive action from external source
- Infection



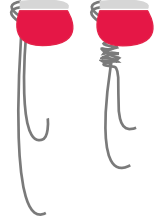
Treatment

Patient knowingly or unknowingly rotating the pacemaker

causes a coiling of the pacemaker lead(s)

eventually displacing pacemaker lead(s)

Twiddler's syndrome



Twiddler's syndrome

Predisposing factors



- Obesity
- Loose and fatty tissue
- Mental illness
- Small pacemakers in large pocket



Treatment

Takeaway message



When assessing a patient with a pacemaker, it is **always** worth taking a few seconds to look at the pacemaker site.
